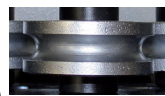


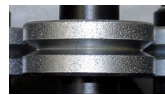
# Wire straighteners

## Small Wire Straightener

WS-1000 and WS-1000A  
 For wire sizes 0,8 - 1,6mm  
 Dimensions: 95 x 78 x 42 mm (W x H x D)  
 Weight: 0,45 Kg



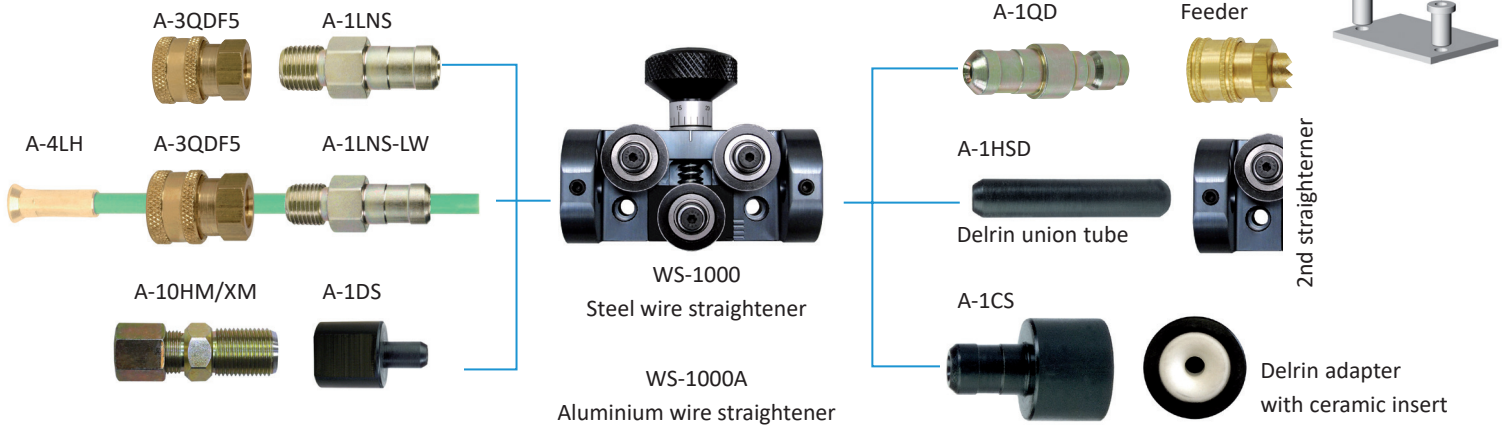
U-Groove Drive Rolls for Steel Wire



V-Groove Drive Rolls for Aluminum Wire

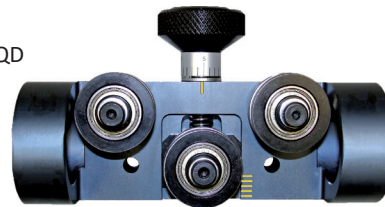
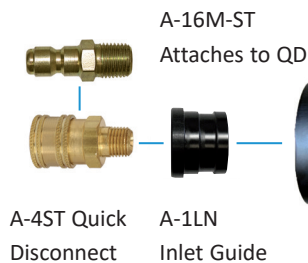
Insulated Mounting kits Available for all

Small: WSS-100-IK  
 Medium: WSM-100IK  
 Large: WSL-100-IK



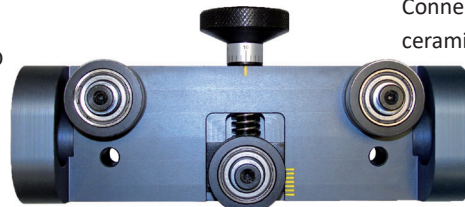
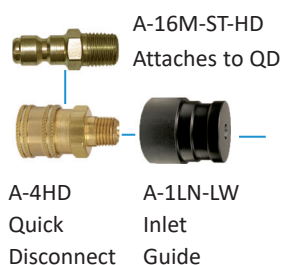
## Medium Wire Straightener

WS-1000H  
 For wire sizes 2,0 - 3,2 mm  
 Dimensions: 145 x 85 x 48 mm (W x H x D)  
 Weight: 0,8 Kg



## Large Wire Straightener

WS-1000L  
 For wire sizes 4,0 - 6,0 mm  
 Dimensions: 220 x 140 x 58 mm (W x H x D)  
 Weight: 1,8 Kg



Use Large bayonet connectors

## Facts and fables about Straighteners

These straighteners have an aluminium body, insulated rollers and are made with a location calibration and a scale at the tension knob for fine adjustment. The units at this page are called wire straighteners, but are in fact wire benders. A unit with three rollers can only bend the wire. When used at a wire coming from a spool you can in fact straighten the wire by bending it in the opposite direction. In case of wire coming from a drum the function of these units is to bend the wire in such way that the wire will not wobble when it comes out of the torch but curve out in one direction. Mainly when using aluminium from drums this can be a big problem. When it comes to the position of the unit at the welding installation, we strongly recommend to mount it at the entrance of the wire feeder.